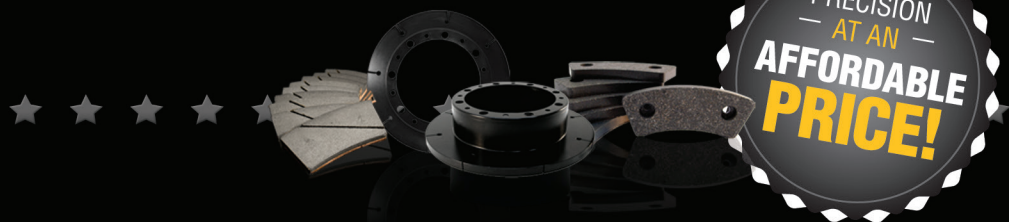


*"Black Steel"*®



The  
**PROVEN ORIGINAL**



PRECISION  
— AT AN —  
**AFFORDABLE  
PRICE!**

APS Brake Disc & Pad Application Guide



**MANUFACTURED BY**



*Find all of our available brake components at*

**WWW.APSBRAKES.COM**

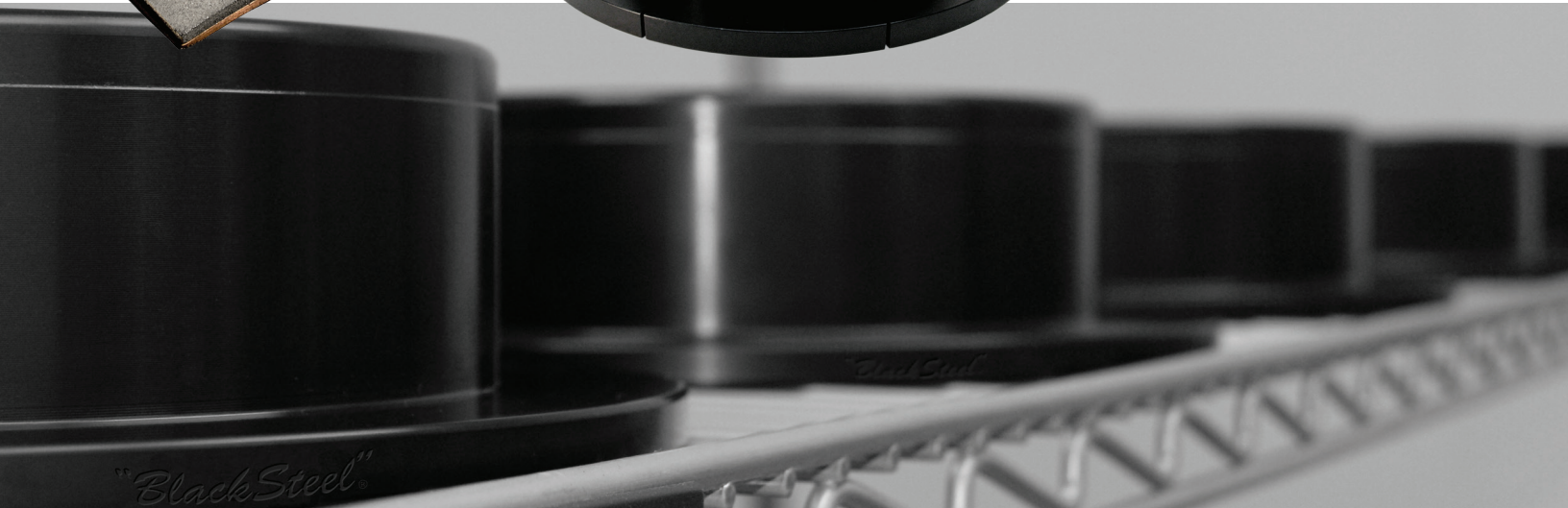
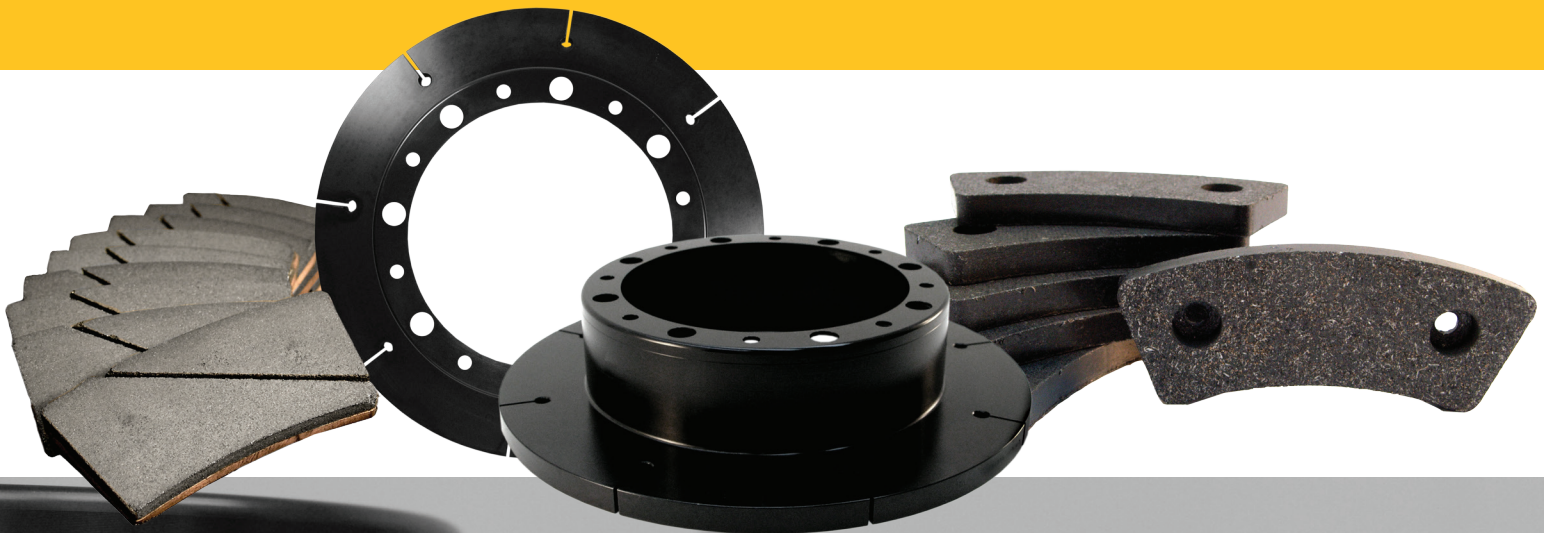


# “BlackSteel”<sup>®</sup> Brake Discs & Linings

APS “BlackSteel”<sup>®</sup> brake discs are truly unique – an innovation in aircraft braking systems. “BlackSteel”<sup>®</sup> brake discs are machined from a one-piece heavy steel forging. When the metal is forged it creates a directional grain flow that follows the contour of the disc. This directional grain flow means the disc has no weld line to break which greatly reduces the risk of cracking. The forgings are machined and then put through our proprietary heat treatment process where they are transformed into the signature “BlackSteel”<sup>®</sup> brake disc. The heat treatment strengthens the steel by bonding the carbon, oxygen and nitrogen in the top layer of the metal. The “BlackSteel”<sup>®</sup> process is not a coating; it is actually a transformation of the top layer of metal, providing corrosion resistance throughout the life of the disc.

There are two types of linings available through APS: Semi-metallic (abrasive) and Metallic (adherent). Our semi-metallic linings are made with Kevlar<sup>®</sup> fibers integrated into the material, providing you with the greatest stopping power and long lining life. The optimal operating temperature of the semi-metallic linings is 600° – 900° F. The main ingredient in our metallic linings is iron. In an adherent system, a thin layer of lining material transfers and adheres to the disc during break-in. The optimal operating temperature range of the metallic linings is 950° – 1200° F.

Manufacturing APS “BlackSteel”<sup>®</sup> brake discs is our passion . . . perfection is our standard.





# QUICK INDEX

## APPLICATION FOR OEM INSTALLED BRAKES

PG. 5-14

<b>A</b>		<b>I</b>	
Aero Commander .....	5	Industria Unidas SA (Mexico).....	10
Aerofab .....	5	<b>L</b>	
Aero Res.....	5	Lancair Company.....	10
Aerostar Aircraft (Piper).....	5	Laviasa .....	10
Ag Cat Productions, Inc. ....	5	Lovaux .....	10
Agusta .....	5	<b>M</b>	
Agusta (Caproni Vizzola).....	5	Marsh Aviation.....	10
Air Tractor .....	5	Maule Air.....	10
American Champion Aircraft .....	5	McCulloch .....	10
Arctic Aircraft .....	5	Mooney.....	10-11
Asta.....	5	<b>N</b>	
Aviat/Pitts/Christen.....	5	NDN Aircraft .....	11
Avions Pierre Robin.....	5-6	<b>P</b>	
Ayres.....	6	Pacific Aerospace .....	11
<b>B</b>		Partenavia .....	11
Bellanca .....	6	Piper .....	11-12
Britten-Norman Aircraft, Ltd .....	6	<b>Q</b>	
Burkhart Grob .....	6	Quest Aircraft Company .....	12
<b>C</b>		<b>R</b>	
Cessna.....	6-9	Raytheon.....	12-13
Cirrus Design Group .....	9	RFB Rhein-Flugzeugbau GMBH .....	13
Classic Aircraft.....	9	<b>S</b>	
Columbia Aircraft .....	9	SAAB-Scania.....	13
<b>D</b>		Sadler Aircraft .....	13
Daimler Benz/M.B.B. ....	9	Schaefer Aircraft Modifications.....	13
De Haviland .....	9	Schleicher .....	13
Diamond Aircraft .....	9	Schweizer.....	13
<b>E</b>		Siai Marchetti.....	13
Eagle Aircraft.....	9	Slingsby Aviation .....	13
Ector Aircraft .....	9	Socata .....	13
Emair Ag Aircraft .....	9	Sportavia.....	13
Embraer .....	9	Stol Aircraft .....	14
<b>F</b>		Swearingen Aircraft .....	14
FFA Flugzeugwerke Altenrhein Ag.....	9	<b>T</b>	
Found Brothers .....	9	Taylorcraft.....	14
<b>G</b>		<b>U</b>	
GAF-Australia .....	9	Univair .....	14
General Aviation (Italy).....	9	<b>V</b>	
Gippsland.....	9	Valmet.....	14
Great Lakes .....	10	Varga .....	14
Grob .....	10	<b>W</b>	
Grumman American .....	10	Waco .....	14
Gulfstream.....	10	Weatherly Aviation .....	14
<b>H</b>		Wing Aircraft .....	14
Helio .....	10	Wipaire Floats.....	14
Hunting Firecracker Aircraft.....	10	WTA .....	14

Product, price, specifications and availability subject to change without notice.



# QUICK INDEX

## APPLICATION FOR WIPAIRE FLOAT INSTALLATIONS

PG. 15

<b>A</b>		<b>P</b>	
Air Tractor .....	15	Pilatus .....	15
<b>C</b>		<b>Q</b>	
Cessna .....	15	Quest Aircraft Company .....	15
<b>M</b>		<b>V</b>	
Maule Air .....	15	Viking Air .....	15

## LINING RETAINING PINS & RIVETS

PG. 16

## APPLICATION FOR CONVERSION KIT INSTALLATIONS

PG. 17-18

<b>A</b>		<b>H</b>	
Aero Commander .....	17	Homebuilt Aircraft .....	17
Ayres .....	17	<b>N</b>	
<b>C</b>		Navion .....	17
Cessna .....	17	<b>P</b>	
<b>D</b>		Piper .....	17-18
De Haviland .....	17	<b>R</b>	
<b>E</b>		Raytheon .....	18
Ercoupe .....	17	<b>S</b>	
<b>G</b>		Schaefer Aircraft Modifications .....	18
Globe Swift .....	17	Swift .....	18
Gulfstream Aerospace .....	17	<b>U</b>	
		Univair .....	18

## APPLICATION FOR KIT PLANE INSTALLATIONS

PG. 19

<b>A</b>		<b>M</b>	
Aircraft Designs .....	19	Murphy Manufacturing .....	19
American Homebuilts .....	19	<b>P</b>	
<b>D</b>		Pacific Aerosystems .....	19
D & J Harmon .....	19	Performance Aircraft .....	19
D.L.F. Holdings .....	19	Pitts .....	19
<b>E</b>		<b>R</b>	
Explorer Aeronautique .....	19	Rans .....	19
Express Aircraft .....	19	<b>S</b>	
<b>F</b>		Skystar Aircraft .....	19
Four Winds Aircraft .....	19	Steen Sero Lab .....	19
<b>H</b>		<b>V</b>	
Hensley Aircraft .....	19	Van's Aircraft .....	19
<b>L</b>		Velocity Aircraft .....	19
Lancair .....	19		

## TECHNICAL INFORMATION

PG. 20



**APPLICATION FOR OEM INSTALLED BRAKES**

Aircraft Model	Year	Serial Number	Wheel Assy	Brake Disc Part Number	Brake Assy	Lining Part Number	Rivet Part Number
<b>AERO COMMANDER</b>							
100-180 Lark			40-86A	APS164-02000	30-56F	APS66-10500	APS105-00200
<b>AEROFAB</b>							
LA-4	1963 and up		40-113X	APS164-04000	30-75X	APS66-10500	APS105-00200
LA-4			40-74	APS164-00700	30-51	APS66-10600	APS105-00200
LA4-180,200 Amphibian			40-113X	APS164-04000	30-75X	APS66-10500	APS105-00200
LA4-180,200 Amphibian	1974		40-74A	APS164-04700	30-51	APS66-10600	APS105-00200
LA4-180,200 Amphibian	1975, 1977 and up		40-74B	APS164-00700	30-51B	APS66-10600	APS105-00200
LA-250 Renegade			40-418	APS164-24500	30-241	APS66-10500	APS105-00200
LA-270 Turbo Renegade			40-418	APS164-24500*	30-241	APS66-10500	APS105-00200
<b>AERO RES</b>							
J-2			40-78B	APS164-01700	30-9	APS66-10600	APS105-00200
<b>AEROSTAR AIRCRAFT (PIPER)</b>							
600, 601, 601P, PA-600A, 601B		171 and up	40-124	APS164-05006	30-88	APS66-02200	APS177-00300
PA-60, 601P, 700P	1975 and up		40-124	APS164-05006	30-88	APS66-02200	APS177-00300
<b>AG CAT PRODUCTIONS, INC.</b>							
G164 Ag-Cat		1-399	40-47	APS164-01100	30-32C	APS66-10600	APS105-00200
G16A Super Ag-Cat		400 and up	40-101	APS164-03006	30-67	APS66-10800	APS105-00200
450, 600		1 and up	40-101	APS164-03006	30-67	APS66-10800	APS105-00200
G164B, G164C, G164D Turbine		1 and up	40-133	APS164-05806	30-84	APS66-10800	APS105-00200
<b>AGUSTA</b>							
C22J			40-151	APS164-08500	30-133	APS66-10500	APS105-00200
C22J			40-151	APS164-08500	30-164	APS66-06200	APS177-00300
<b>AGUSTA (CAPRONI VIZZOLA)</b>							
C22J			40-151	APS164-08500	30-133	APS66-10500	APS105-00200
<b>AIR TRACTOR</b>							
AT-300			40-101	APS164-03006	30-67X	APS66-10800	APS105-00200
AT-301,302,302A,400A			40-101	APS164-03006	30-89	APS66-10800	APS105-00200
AT-400,402,501,502,503,503A			40-133	APS164-05806	30-98C	APS66-10800	APS105-00200
AT-401,401A			40-234	APS164-05606	30-184	APS66-10800	APS105-00200
AT-602			40-403	APS164-22202	30-231	APS66-06600	APS177-00300
AT-802			40-279	APS164-23001	30-210	APS66-13100	APS105-06700-100
AT-802			40-279A	APS164-23002	30-210A	APS66-13100	APS105-06700-100
<b>AMERICAN CHAMPION AIRCRAFT</b>							
7ECA, 7GCAA, 7GCBC, 7KCAB, 7SRS	1964 and up		40-28D	APS164-00500	30-19A	APS66-10600	APS105-00200
7ACA Champ	up to 1970		40-28D	APS164-00500	30-19A	APS66-10600	APS105-00200
7ACA Champ	1971 and up		40-78B	APS164-01700	30-9	APS66-10600	APS105-00200
8GCBC Scout			40-47	APS164-01100	30-32B	APS66-10600	APS105-00200
8KCAB Decathalon			40-28D	APS164-00500	30-19A	APS66-10600	APS105-00200
T-250 Aries			40-75G	APS164-01501	30-52S	APS66-10500	APS105-00200
<b>ARCTIC AIRCRAFT</b>							
S1B2 Arctic Tern		001-1021	40-28	APS164-00500	30-18	APS66-10600	APS105-00200
S1B2 Arctic Tern		1022 and up	40-86B	APS164-02000	30-55	APS66-10500	APS105-00200
<b>ASTA</b>							
N22B, N22S, N24A			40-75T	APS164-08300	30-52Q	APS66-10500	APS105-00200
N24A			40-143	APS164-08200	30-129	APS66-06200	APS177-00300
<b>AVIAT/PITTS/CHRISTEN</b>							
S-1,2 Pitts Special Series			40-78B	APS164-01700	30-9	APS66-10600	APS105-00200
A-1 Husky			40-60	APS164-06700	30-60	APS66-10600	APS105-00200
<b>AVIONS PIERRE ROBIN</b>							
140, 160				APS164-03601	30-52T	APS66-10500	APS105-00200
DR400 Series			40-97D	APS164-02601	30-63E	APS66-10500	APS105-00200

Product, price, specifications and availability subject to change without notice.





## APPLICATION FOR OEM INSTALLED BRAKES (CONT'D)

Aircraft Model	Year	Serial Number	Wheel Assy	Brake Disc Part Number	Brake Assy	Lining Part Number	Rivet Part Number
<b>AVIONS PIERRE ROBIN (CONT'D)</b>							
HR100/120, 200			N/A	APS164-02601	30-63D	APS66-10500	APS105-00200
HR100/120, 200			N/A	N/A	30-63E	APS66-10500	APS105-00200
HR100/200, 210			N/A	APS164-03601	30-52N	APS66-10500	APS105-00200
HR400 Series			N/A	N/A	30-52T	APS66-10500	APS105-00200
R1000 Series, R2000 Series, R3000 Series			N/A	N/A	30-63E	APS66-10500	APS105-00200
R2160			40-97A	APS164-02601	30-63E	APS66-10500	APS105-00200
<b>AYRES</b>							
S2R-600 Thrush		1939-2173R	40-129	APS164-05606	30-94	APS66-10800	APS105-00200
S2R-600 Thrush		2174R-2529R	40-129	APS164-05606	30-94	APS66-10800	APS105-00200
S2R-600 Thrush			40-133	APS164-05806	30-98D	APS66-10800	APS105-00200
S2R-600 Thrush		2530R and up	40-133	APS164-05806	30-98D	APS66-10800	APS105-00200
S2R-660 Turbo Thrush			40-403	APS164-22202	30-231	APS66-06600	APS177-01600
S2R-800 Thrush		5000R-5082R	40-129	APS164-05806	30-94	APS66-10800	APS105-00200
S2R-800 Thrush		5083R and up	40-133	APS164-05806	30-98	APS66-10800	APS105-00200
S2R-PZL600 Thrush		R35-001 and up	40-133	APS164-05806	30-98D	APS66-10800	APS105-00200
S2R-R1340		R1340-001 and up	40-133	APS164-05806	30-98D	APS66-10800	APS105-00200
S2R-R1820		R1820-001 and up	40-133	APS164-05806	30-98D	APS66-10800	APS105-00200
S2R-R3S			40-133	APS164-05806	30-98D	APS66-10800	APS105-00200
S2R-T11		T11-001 and up	40-133	APS164-05806	30-98D	APS66-10800	APS105-00200
S2R-T15 Turbo Thrush		T15-001	40-133	APS164-05806	30-98	APS66-10800	APS105-00200
S2R-T15 Turbo Thrush		T15-002 and up	40-133	APS164-05806	30-98D	APS66-10800	APS105-00200
S2R-T34 Turbo Thrush		6000-6023	40-133	APS164-05806	30-98	APS66-10800	APS105-00200
S2R-T34 Turbo Thrush		6024 and up	40-133	APS164-05806	30-98D	APS66-10800	APS105-00200
S2R-T41 Turbo Thrush		T41-089, 090	40-133	APS164-05806	30-98D	APS66-10800	APS105-00200
S2R-T65 Turbo Thrush		T65-001 and up	40-133	APS164-05806	30-98D	APS66-10800	APS105-00200
S2R-T65HG Turbo Thrush		T65HG-001 and up	40-133	APS164-05806	30-98D	APS66-10800	APS105-00200
<b>BELLANCA</b>							
17-30A, 17-31A, 17-31ATC Viking 300A			40-75E	APS164-01501	30-52M	APS66-10500	APS105-00200
DW-1			40-101	APS164-03006	30-89A	APS66-10800	APS105-00200
<b>BRITTEN-NORMAN AIRCRAFT LTD</b>							
BN-2,2A,2B,2T	1969-1979		40-90	APS164-02201	30-23A	APS66-01500	APS177-00300
BN-2,2A,2B,2T	1979 and up		40-90B	APS164-02201	30-23C	APS66-06500	APS177-00300
BN-2 Series	All		40-90F	APS164-01506	30-23D	APS66-06500	APS177-00300
BN-2A Mk111, Mk111-2,3			40-98F	APS164-02706	30-66D	APS66-02200	APS177-00300
Defender 4000			40-128E	**164-23300	30-93E	APS66-04400	APS177-00300
<b>BURKHART GROB</b>							
G103, G103C Twin III Sailplane			40-97A	APS164-02601	30-63A	APS66-10500	APS105-00200
G109 Series Power Glider			40-78B	APS164-01700	30-9	APS66-10600	APS105-00200
<b>CESSNA</b>							
120, 140, 140A			40-97A	APS164-02601	30-63A	APS66-10500	APS105-00200
150A,B	1961-1962	150-59119-59700	40-12	APS164-00400	30-9	APS66-10600	APS105-00200
150C	1963		40-19	APS164-00400	30-9	APS66-10600	APS105-00200
150C			40-57	APS164-00500	30-40	APS66-10600	APS105-00200
150D,E	1964-1965		40-79A	APS164-01600	30-40	APS66-10600	APS105-00200
150F,G; F150F,G	1966-1967		40-97	APS164-02601	30-63	APS66-10500	APS105-00200
150H,J,K; F150H,J	1968-1970		40-97A	APS164-02601	30-63A	APS66-10500	APS105-00200
A150K	1970		40-97A	APS164-02601	30-63A	APS66-10500	APS105-00200
150L	1971 and up		40-113	APS164-04000	30-75	APS66-10500	APS105-00200
A150L	1971 and up		40-113	APS164-04000	30-75	APS66-10500	APS105-00200
F150K	1970 and up		40-113	APS164-04000	30-75	APS66-10500	APS105-00200
FA150K,L	1970-1971		40-113	APS164-04000	30-75	APS66-10500	APS105-00200
FRA150L	1972 and up		40-113	APS164-04000	30-75	APS66-10500	APS105-00200
152 Series	1978 and up		40-113	APS164-04000	30-75	APS66-10500	APS105-00200

Product, price, specifications and availability subject to change without notice.

## APPLICATION FOR OEM INSTALLED BRAKES (CONT'D)

Aircraft Model	Year	Serial Number	Wheel Assy	Brake Disc Part Number	Brake Assy	Lining Part Number	Rivet Part Number
<b>CESSNA (CONT'D)</b>							
A152 Series	1978 and up		40-113	APS164-04000	30-75	APS66-10500	APS105-00200
F152, FA152 Series	1978 and up		40-113	APS164-04000	30-75	APS66-10500	APS105-00200
150, 152, A150	1971-1973	McCauley	D-30063	N/A	C-30018	APS66-10900	APS105-00200
F150, F152	1973-1976	McCauley	D-30260	APS164-30195	C-30018	APS66-10900	APS105-00200
FA152	1976	McCauley	D-30580	APS164-30195	C-30018-4	APS66-10900	APS105-00200
FA152	1976-1977	McCauley	D-30291-6	APS164-30440	C-30018-4	APS66-10900	APS105-00200
FA152	1977	McCauley	D-30600-1	N/A	C-30018-5	APS66-10900	APS105-00200
FA152	1978 and up	McCauley	D-30660-1	APS164-30615-4	C-30764-5	APS66-10900	APS105-00200
172, 172A,B,C Skyhawk		172-46421-49544	40-113	APS164-04000	30-75	APS66-10500	APS105-00200
172D	1963	172-49545-50572	40-97A	APS164-02601	30-63A	APS66-10500	APS105-00200
172E-M	1964-1974	172-50573-63458	40-97A	APS164-02601	30-63A	APS66-10500	APS105-00200
172F	1965	172-51823-52808	40-97A	APS164-02601	30-56	APS66-10500	APS105-00200
172F-H	1965-1967	172-52809-56512	40-97A	APS164-02601	30-63	APS66-10500	APS105-00200
172I,K	1968-1970	172-56513-59223	40-97A	APS164-02601	30-63A	APS66-10500	APS105-00200
172L-S	1971 and up	172-59224 and up	40-113	APS164-04000	30-75A	APS66-10500	APS105-00200
F172F,G	1965-1966	F172-0096-0204	40-97A	APS164-02601	30-56	APS66-10500	APS105-00200
F172G,H	1966-1970	F172-0205-00754	40-97A	APS164-02601	30-63A	APS66-10500	APS105-00200
F172K	1971 and up	F172-00755 and up	40-113	APS164-04000	30-75A	APS66-10500	APS105-00200
F172RG		172RG0001 and up	40-113	APS164-04000	30-75	APS66-10500	APS105-00200
172, R172	1971-1973	McCauley	D-30063	N/A	C-30018-2	APS66-10900	APS105-00200
F172, FR172	1973-1976	McCauley	D-30260	APS164-30195	C-30018-2	APS66-10900	APS105-00200
F172, FR172	1976	McCauley	D-30580	APS164-30195	C-30018-2	APS66-10900	APS105-00200
F172, FR172	1977	McCauley	D-30600-1	N/A	C-30018-6	APS66-10900	APS105-00200
F172, FR172	1978-1981	McCauley	D-30660-1	APS164-30615-4	C-30018-6	APS66-10900	APS105-00200
F172, FR172	1982 and up	McCauley	D-30660-1	APS164-30615-4	C-30764-6	APS66-10900	APS105-00200
172RG Cutlass	1980-1981	McCauley	D-30660-1	APS164-30615-4	C-30018-6	APS66-10900	APS105-00200
172RG Cutlass	1982 and up		D-30660-1	APS164-30615-4	C-30764-6	APS66-10900	APS105-00200
175 Skylark	1959-1962	172-55876-57119	40-97A	APS164-02601	30-63A	APS66-10500	APS105-00200
177A,B	1969-1970	177-01165-01530	40-97A	APS164-02601	30-63A	APS66-10500	APS105-00200
177A,B	1969-1970	177-01531 and up	40-113	APS164-04000	30-75	APS66-10500	APS105-00200
117, 177RG, F177RG	1971 and up		40-113	APS164-04000	30-75	APS66-10500	APS105-00200
117, 177RG, F177RG	1975	McCauley	D-30580	APS164-30195	C-30018-4	APS66-10900	APS105-00200
117, 177RG, F177RG	1976	McCauley	D-30291-6	APS164-30440	C-30018-4	APS66-10900	APS105-00200
117, 177RG, F177RG	1977	McCauley	D-30660-1	N/A	C-30018-5	APS66-10900	APS105-00200
117, 177RG, F177RG	1978	McCauley	D-30660-1	APS164-30615-4	N/A	APS66-10900	APS105-00200
180G	1964 and up	180-51313 and up	40-75B	APS164-01501	30-52	APS66-10500	APS105-00200
180H	1967-1968	180-51775-51993	40-66	APS164-00700	30-21	APS66-10600	APS105-00200
180H	1969-1971	180-52011-52195	40-75D	APS164-03601	30-52D	APS66-10500	APS105-00200
180H	1971 and up	180-52196 and up	40-75D	APS164-03601	30-52N	APS66-10500	APS105-00200
180 Series	1973-1974	McCauley	D-30063-1	N/A	D-30118-1	APS66-10900	APS105-00200
180 Series	1974	McCauley	D-30291-3	APS164-30414	D-30118-5	APS66-10900	APS105-00200
180 Series	1974-1978	McCauley	D-30291-1	APS164-30388	D-30118-5	APS66-10900	APS105-00200
180 Series	1978 and up	McCauley	D-30660-2	APS164-30615-2	D-30118-5	APS66-10900	APS105-00200
182B,C,D,E	1959-1962	182-51886-54423	40-97A	APS164-02601	30-63A	APS66-10500	APS105-00200
182E,F	1962-1963	182-53599-55058	40-97A	APS164-02601	30-63A	APS66-10500	APS105-00200
182G-N	1964-1970	182-55059-60445	40-97A	APS164-02601	30-56A	APS66-10500	APS105-00200
182N	1971 and up	182-60446-67715	40-113	APS164-04000	30-75	APS66-10500	APS105-00200
182S,T; T182T	1996 and up		40-75B	APS164-01501	30-52U	APS66-10500	APS105-00200
182, F182	1976	McCauley	D-30291-6	APS164-30440	C-30018-4	APS66-10900	APS105-00200
182, F182	1977	McCauley	D-30600-1	N/A	C-30018-5	APS66-10900	APS105-00200
182, F182	1978-1980	McCauley	D-30660-1	APS164-30615-4	C-30018-5	APS66-10900	APS105-00200
T182	1981 and up	McCauley	D-30660-3	APS164-30615-3	D-30118-3	APS66-10900	APS105-00200
R182, TR182, FR182	1978 and up	McCauley	D-30660-3	APS164-30615-3	D-30118-3	APS66-10900	APS105-00200
185, 185A	1961-1962	185-0001-0512	40-32	APS164-00700	30-21	APS66-10600	APS105-00200
185B	1963	185-0513-0653	40-66	APS164-00700	30-21	APS66-10600	APS105-00200

Product, price, specifications and availability subject to change without notice.



## APPLICATION FOR OEM INSTALLED BRAKES (CONT'D)

Aircraft Model	Year	Serial Number	Wheel Assy	Brake Disc Part Number	Brake Assy	Lining Part Number	Rivet Part Number
<b>CESSNA (CONT'D)</b>							
185C-E	1964-1966	185-0654-1095	40-75B	APS164-01501	30-52	APS66-10500	APS105-00200
A185E,F	1966 and up	185-1096 and up	40-75B	APS164-01501	30-52	APS66-10500	APS105-00200
A185E,F	1969 and up	185-1471 and up	40-75D	APS164-03601	30-52D	APS66-10500	APS105-00200
A185E	1967-1968	185-1150-1470	40-66	APS164-00700	30-21	APS66-10600	APS105-00200
185 Series	1973-1974	McCauley	D-30291-3	APS164-30414	D-30118-5	APS66-10900	APS105-00200
185 Series	1974-1978	McCauley	D-30291-1	APS164-30388	D-30118-5	APS66-10900	APS105-00200
185 Series	1978 and up	McCauley	D-30660-2	APS164-30615-2	D-30118-5	APS66-10900	APS105-00200
188, A188, 188A, A188A, 188B	1966-1972		40-75B	APS164-01501	30-52B	APS66-10500	APS105-00200
188, A188, 188A, A188A, 188B	1966-1972		40-101A	APS164-03106	30-67A	APS66-10800	APS105-00200
A188B, T188C	1973 and up		40-101	APS164-03006	30-67A	APS66-10800	APS105-00200
A188B, T188C	1973 and up		40-98A	APS164-02707	30-66A	APS66-11000	APS105-00200
205	1963	205-001-0480	40-67	APS164-00700	30-35	APS66-10600	APS105-00200
205A	1964	205-0481-0577	40-75B	APS164-01501	30-52	APS66-10500	APS105-00200
206	1964	206-0001-0275	40-75B	APS164-01501	30-52	APS66-10500	APS105-00200
U206	1965-1969	U206-0276-1256	40-75B	APS164-01501	30-52	APS66-10500	APS105-00200
U206	1969 and up	U206-1257 and up	40-75D	APS164-03601	30-52N	APS66-10500	APS105-00200
P206	1965-1969	P206-001-0566	40-75B	APS164-01501	30-52	APS66-10500	APS105-00200
P206	1969 and up	P206-0567 and up	40-75D	APS164-03601	30-52N	APS66-10500	APS105-00200
206 Series	1974-1978	McCauley	D-30291-2	APS164-30398	D-30118-4	APS66-10900	APS105-00200
206 Series	1978 and up	McCauley	D-30660-3	APS164-30615-3	D-30118-4	APS66-10900	APS105-00200
206 Series	1974-1978	McCauley	D-30291-1	APS164-30388	D-30118-6	APS66-10900	APS105-00200
206 Series	1978 and up	McCauley	D-30660-2	APS164-30615-2	D-30118-6	APS66-10900	APS105-00200
206H, T206H	1996 and up		40-75B	APS164-01501	30-52U	APS66-10500	APS105-00200
207 Series	1969 and up	207-00001 and up	40-75B	APS164-01501	30-52F	APS66-10500	APS105-00200
207 Series	1969 and up	207-00001 and up	40-75D	APS164-03601	30-52E	APS66-10500	APS105-00200
208 Caravan 1		1-138	40-179	APS164-22201	30-163	APS66-03300	APS177-00300
208 Caravan 1		139 and up	40-179	APS164-22201	30-182	APS66-03300	APS177-00300
208B		1-53	40-179	APS164-22201	30-163	APS66-03300	APS177-00300
208B		54 and up	40-179	APS164-22201	30-182	APS66-03300	APS177-00300
210C	1963	210-58086-58220	40-21	APS164-00900	30-45	APS66-11100	APS105-00200
210D-M	1964-1978	210-58221-62954	40-75B	APS164-01501	30-52	APS66-10500	APS105-00200
T210F	1966 and up	T210-0001 and up	40-75B	APS164-01501	30-52	APS66-10500	APS105-00200
P210	1984		40-142	APS164-07800	30-127C	APS66-06200	APS177-00300
210N	1979 and up	210-62955 and up	40-75B	APS164-01501	30-52V	APS66-10500	APS105-00200
P210N	1979 and up		40-75B	APS164-01501	30-52V	APS66-10500	APS105-00200
210 Series	1974-1978	McCauley	D-30291-2	APS164-30398	D-30118-4	APS66-10900	APS105-00200
210 Series	1978 and up	McCauley	D-30660-3	APS164-30615-3	D-30118-4	APS66-10900	APS105-00200
303, T303	1982 and up		40-142	APS164-07800	30-127C	APS66-06200	APS177-00300
303, T303			40-98H	APS164-08406	30-66F	APS66-04400	APS177-00300
305A-F	1951 and up		40-97E	APS164-02601	30-63K	APS66-10500	APS105-00200
305A-F	1951 and up		40-75F	APS164-01501	30-52L	APS66-10500	APS105-00200
310 Series	1976-1981		40-40A	APS164-00806	30-28B	APS66-03300	APS177-00400
310 Series	1981 and up		40-40D	APS164-20206	30-28B	APS66-03300	APS177-00400
335	1979 and up		40-40A	APS164-00806	30-28B	APS66-03300	APS177-00400
336	1964	336-0001-0098	40-67	APS164-00700	30-35	APS66-10600	APS105-00200
336	1964	336-0099 and up	40-75B	APS164-01501	30-52	APS66-10600	APS105-00200
337, 337A	1965-1966	337-0001-0525	40-96A	APS164-02504	30-61	APS66-10500	APS105-00200
337B	1967	337-0526-0619	40-96A	APS164-02504	30-61A	**66-03600	APS105-00200
337B-D	1967-1969	337-0620-1193	40-96A	APS164-02504	30-61D	APS66-10500	APS105-00200
337E	1970 and up	337-01194 and up	40-98A	APS164-02707	30-69B	APS66-02200	APS177-00300
340 Series	1972-1981		40-40A	APS164-00806	30-28B	APS66-03300	APS177-00400
340 Series	1981 and up		40-40D	APS164-20206	30-28B	APS66-03300	APS177-00400
401 Series	All		40-40A	APS164-00806	30-28B	APS66-03300	APS177-00400
402 Series	All		40-135	APS164-06406	30-100	APS66-06600	APS177-01600
402 Series	1981 and up		40-135A	APS164-20306	30-100	APS66-06600	APS177-01600

Product, price, specifications and availability subject to change without notice.





**APPLICATION FOR OEM INSTALLED BRAKES (CONT'D)**

Aircraft Model	Year	Serial Number	Wheel Assy	Brake Disc Part Number	Brake Assy	Lining Part Number	Rivet Part Number
<b>CESSNA (CONT'D)</b>							
404 Titan	1976 and up	404-00001 and up	40-132	APS164-09100	30-97	APS66-06400	APS177-01600
411, 411A	1965-1968		40-40A	APS164-00806	30-28B	APS66-03300	APS177-00400
414 Chancellor			40-40A	APS164-00806	30-28B	APS66-03300	APS177-00400
414A			40-135	APS164-06406	30-100	APS66-06600	APS177-01600
414A	1981 and up		40-135A	APS164-20306	30-100	APS66-06600	APS177-01600
414 Series	1976-1977	McCauley	N/A	N/A	N/A	APS66-06600	APS177-01600
421C	1976-1980		40-135	APS164-06406	30-100	APS66-06600	APS177-01600
421C	1981 and up		40-135A	APS164-20306	30-100	APS66-06600	APS177-01600
425		425-0001 and up	40-138	APS164-05500	30-113	APS66-06400	APS177-01600
		425-0001 and up	40-138A	APS164-05500	30-113A	APS66-06400	APS177-01600
<b>CIRRUS DESIGN GROUP</b>							
SR-20		1601 and up <sup>1</sup>	40-75P	APS164-01501	30-52AB	APS66-10500	APS105-00200
SR-22		1740 and up <sup>2</sup>	40-406	APS164-02504	30-233B	APS66-06200	APS177-00300
<sup>1</sup> Serial numbers 1600 and under upgrade to 40-75P/30-52AB per Cirrus Service Bulletin SBX-32-13							
<sup>2</sup> Serial numbers 1739 and under upgrade to 40-406/30-233B per Cirrus Service Bulletin SBX-32-13							
<b>CLASSIC AIRCRAFT</b>							
YMF-5 Waco		F5001 and up	40-223	APS164-03106	30-176	APS66-10800	APS105-00200
<b>COLUMBIA AIRCRAFT</b>							
300		All	40-406A	APS164-02504*	30-233A	APS66-06200	APS177-00300*
350, 400		All	40-406A	APS164-02504*	30-233A	APS66-06200*	APS177-00300*
<b>DAIMLER BENZ/M.B.B.</b>							
B.O. 208			40-12	APS164-04000	30-9	APS66-10600	APS105-00200
B.O. 209 Monsun			40-78B	APS164-01700	30-9	APS66-10600	APS105-00200
<b>DE HAVILAND</b>							
DH.C1			40-97D	APS164-02601	30-63P	APS66-10500	APS105-00200
DHC-2 MK.1,,2,,3			40-134	N/A	30-99	APS66-06600	APS177-01600
<b>DIAMOND AIRCRAFT</b>							
DA20 Katana			40-78E	APS164-24200	30-9D	APS66-10600	APS105-00200
DA40			40-14A	APS164-24400	30-239	APS66-14100	APS105-00200
DA42 Twin Star			40-75Z	APS164-01501	30-52Z	APS66-10500	APS105-00200
<b>EAGLE AIRCRAFT</b>							
220, 300 Eagle		1 and up	40-101	APS164-03006	30-89A	APS66-10800	APS105-00200
<b>ECTOR AIRCRAFT</b>							
L-19, Mountaineer, Super Mountaineer			40-97A	APS164-02601	30-63A	APS66-10500	APS105-00200
<b>EMAIR AG AIRCRAFT</b>							
MA-1B Diablo 1200	1978 and up		40-139	**164-07306	30-111	APS66-10800	APS105-00200
<b>EMBRAER</b>							
EM-312 (T-27) Tucano			40-130	APS164-07906	30-95B	APS66-06600	APS177-01600
<b>FFA FLUGZEUGWERKE ALTENRHEIN AG</b>							
AS202-18A4 Bravo		224 and up	40-97A	APS164-02601	30-63A	APS66-10500	APS105-00200
<b>FOUND BROTHERS</b>							
100 Centennial			40-75B	APS164-01501	30-52	APS66-10500	APS105-00200
<b>GAF-AUSTRALIA</b>							
N22, N22B, N22S, N24			40-75T	APS164-08300	30-52Q	APS66-10500	APS105-00200
N24A Searchmaster			40-143	APS164-08200	30-129	APS66-06200	APS177-00300
<b>GENERAL AVIATION (ITALY)</b>							
F.20 Pegaso, F.20TP Condor			40-75G	APS164-01501	30-52P	APS66-10500	APS105-00200
F.22 Pinguino			40-151	APS164-08500	30-164	APS66-06200	APS177-00300
F.1300 Jet Squalus			40-131	APS164-05700	30-96	APS66-06200	APS177-00300
<b>GIPPSLAND</b>							
GA8		All	40-75T	APS164-08300*	30-52N	APS66-10500*	APS105-00200*

Product, price, specifications and availability subject to change without notice.



## APPLICATION FOR OEM INSTALLED BRAKES (CONT'D)

Aircraft Model	Year	Serial Number	Wheel Assy	Brake Disc Part Number	Brake Assy	Lining Part Number	Rivet Part Number
<b>GREAT LAKES</b>							
2T-1A, 2T-1A-1,2			40-113	APS164-04000	30-75	APS66-10500	APS105-00200
<b>GROB</b>							
G103, G103C			40-97A	APS164-02601	30-63A	APS66-10500	APS105-00200
G109 Series			40-78B	APS164-01700	30-9	APS66-10600	APS105-00200
G115, G115-B,C			40-78B	APS164-01700	30-9	APS66-10600	APS105-00200
G115-T,TA			40-84	APS164-01900	30-41B	APS66-10600	APS105-00200
<b>GRUMMAN AMERICAN</b>							
112, 112A,B		1-495	40-113A	APS164-04300	30-79	APS66-10500	APS105-00200
112, 112A,B		500 and up	40-75H	APS164-01501	30-52H	APS66-10500	APS105-00200
112TC,TCA; 114, 114B		13000 and up	40-75H	APS164-01501	30-52H	APS66-10500	APS105-00200
AA-1,A,B; TR-2	All up to 1974		40-86A	APS164-02000	30-55B	APS66-10500	APS105-00200
AA-1,A,B; TR-2	1975 and up		40-88C	APS164-02000	30-56B	APS66-10500	APS105-00200
AA-5 Traveler	All up to 1974		40-86A	APS164-02000	30-55B	APS66-10500	APS105-00200
AA-5A,5B	1975 and up		40-88C	APS164-02000	30-56B	APS66-10500	APS105-00200
GA-7 Cougar			40-90	APS164-02201	30-23B	APS66-06500	APS177-00300
<b>GULFSTREAM AEROSPACE</b>							
700			40-128C	APS164-05006	30-93A	APS66-02200	APS177-00300
<b>HELIO</b>							
H-250, 295, 391, 395 Courier			40-75E	APS164-01501	30-52A	APS66-10500	APS105-00200
H-250, 295, 391, 395 Courier			40-75D	APS164-03601	30-52N	APS66-10500	APS105-00200
H-250, 295, 391, 395 Courier			40-75T	APS164-08300	30-52N	APS66-10500	APS105-00200
H-250, 295, 391, 395 Courier			40-98A	APS164-02707	30-66A	APS66-11000	APS105-00200
<b>HUNTING FIRECRACKER AIRCRAFT</b>							
NDN1T Turbo Firecraker			40-120C	APS164-21600	30-83A	APS66-06200	APS177-00300
<b>INDUSTRIA UNIDAS SA (MEXICO)</b>							
A-98 Sparrow, Quail			40-99	APS164-02800	30-41	APS66-10600	APS105-00200
<b>LANCAIR COMPANY</b>							
300 Columbia			40-406A	APS164-02504	30-233A	APS66-06200	APS177-00300
<b>LAVIASA</b>							
PA-25 Pawnee		25-1-25-1999	3070	**159-00100	30-12	APS66-10600	APS105-00200
PA-25-235,235B		25-2000-25-4171	40-61	APS164-01300	N/A	APS66-10600	APS105-00200
PA-25-235D, PA-25-260C,D		25-4172 and up	40-84A	APS164-03300	30-41B	APS66-10600	APS105-00200
<b>LOVAUX</b>							
EA7 Optica		1 and up	40-86	APS164-02000	30-55	APS66-10500	APS105-00200
<b>MARSH AVIATION</b>							
S2R-T Turbo Thrush			40-129	APS164-05606	30-94	APS66-10800	APS105-00200
S2R-T Turbo Thrush			40-133	APS164-05806	30-94	APS66-10800	APS105-00200
G-164C-T Turbo Cat			40-133	APS164-05806	30-84	APS66-10800	APS105-00200
<b>MAULE AIR</b>							
M4 Series			40-97D	APS164-02601	30-63E	APS66-10500	APS105-00200
M5 Series, M6 Series			40-97D	APS164-02601	30-63E	APS66-10500	APS105-00200
M7 Series			40-75D	APS164-03601	30-52N	APS66-10500	APS105-00200
M9 Series			40-75D	APS164-03601	30-52AA	APS66-10500	APS105-00200
<b>MCCULLOCH</b>							
J-2 Helicopter			40-78B	APS164-01700	30-9	APS66-10600	APS105-00200
<b>MOONEY</b>							
M10 Cadet		690001 and up	40-97	APS164-02601	30-63	APS66-10500	APS105-00200
M20A,B; Mark 20		1401-3466	40-24	APS164-00900	30-5	APS66-11100	APS105-00200
M20C		670001 and up	40-86	APS164-02000	30-56A	APS66-10500	APS105-00200
M20C,D		101-260	40-24	APS164-00900	30-5	APS66-11100	APS105-00200
M20E		101-1308	40-24	APS164-00900	30-5	APS66-11100	APS105-00200

Product, price, specifications and availability subject to change without notice.



**APPLICATION FOR OEM INSTALLED BRAKES (CONT'D)**

Aircraft Model	Year	Serial Number	Wheel Assy	Brake Disc Part Number	Brake Assy	Lining Part Number	Rivet Part Number
<b>MOONEY (CONT'D)</b>							
M20E		670001 and up	40-86	APS164-02000	30-56A	APS66-10500	APS105-00200
M20F		660003 and up	40-86	APS164-02000	30-56A	APS66-10500	APS105-00200
M20G		680001 and up	40-86	APS164-02000	30-56A	APS66-10500	APS105-00200
M20J		24-001 and up	40-86	APS164-02000	30-56A	APS66-10500	APS105-00200
M20K		25-001 and up	40-86	APS164-02000	30-56A	APS66-10500	APS105-00200
M20M		All	40-90A	APS164-02300	30-65	APS66-10500	APS105-00200
<b>NDN AIRCRAFT</b>							
NDN6 Fieldmaster			40-175	**164-21100	30-149	APS66-06600	APS177-01600
<b>PACIFIC AEROSPACE</b>							
FU24-950,954; FU24A-954	1978 and up		40-47	APS164-01100	30-32C	APS66-10600	APS105-00200
08-600 Cresco			40-101	APS164-03006	30-89	APS66-10800	APS105-00200
<b>PARTENAVIA</b>							
P.64B, P.66B	1970 and up		40-28	APS164-00500	30-18	APS66-10600	APS105-00200
P.66C-160, P.66T			40-86B	APS164-02000	30-55	APS66-10500	APS105-00200
P.68, P.68B, P.68C, P.68C-TC			40-96E	APS164-02504	30-61E	APS66-10500	APS105-00200
P.68, P.68B, P.68C, P.68C-TC			40-142	APS164-07800	30-127	APS66-06200	APS177-00300
Series 300			40-163	APS164-20500	30-139	APS66-06200	APS177-00300
<b>PIPER</b>							
PA-18-150, PA-18A-150		18-7609137 and up	40-60	APS164-06700	30-60	APS66-10600	APS105-00200
PA-22-108 Colt			40-28	APS164-00500	30-18	APS66-10600	APS105-00200
PA-23-150,160			40-3	**159-00200	30-13	APS66-10600	APS105-00200
PA-23-235		27-1-3737	40-4	APS164-00206	30-8	APS66-10600	APS105-00200
PA-23-250		27-3738-7554	40-116	APS164-03206	30-72	APS66-06500	APS177-00300
PA-23-250		27-7554138	40-131	APS164-05700	30-96	APS66-06200	APS177-00300
PA-24-180,250,260		24-1-3306	40-5	**159-00100	30-12	APS66-10600	APS105-00200
PA-24-180,250,260		24-3307 and up	40-58	APS164-00900	30-41	APS66-10600	APS105-00200
PA-24-180,250,260			40-84	APS164-01900	30-41B	APS66-10600	APS105-00200
PA-24-400		24-130 and up	40-90	APS164-02201	30-23	APS66-06500	APS177-00300
PA-28-140 Cherokee/Cruiser		28-20002-20520	40-28	APS164-00500	30-18	APS66-10600	APS105-00200
PA-28-140 Cherokee/Cruiser		28-20521 and up	40-86	APS164-02000	30-55	APS66-10500	APS105-00200
PA-28-150 Cherokee		28-1-1760	40-28	APS164-00500	30-18	APS66-10600	APS105-00200
PA-28-160		28-1761 and up	40-86	APS164-02000	30-55	APS66-10500	APS105-00200
PA-28-151 Cherokee/Warrior			40-86B	APS164-02000	30-55	APS66-10500	APS105-00200
PA-28-161 Cherokee/Warrior II			40-86B	APS164-02000	30-55	APS66-10500	APS105-00200
PA-28-180 Cherokee/Archer		28-1-1760	40-28	APS164-00500	30-18	APS66-10600	APS105-00200
PA-28-180 Cherokee/Archer		28-1761 and up	40-86	APS164-02000	30-55	APS66-10500	APS105-00200
PA-28-181 Cherokee/Archer II			40-86B	APS164-02000	30-55	APS66-10500	APS105-00200
PA-28-235 Cherokee/Pathfinder		28-10487 and up	40-86	APS164-02000	30-55	APS66-10500	APS105-00200
PA-28-236 Dakota		28-7911001 and up	40-86B	APS164-02000	30-55	APS66-10500	APS105-00200
PA-28-236 Dakota		28-8111001 and up	40-90A	APS164-02300	30-65	APS66-10500	APS105-00200
PA-28R-180		28R-30005-1730005	40-84	APS164-01900	30-41	APS66-10600	APS105-00200
PA-28R-180		28R-7130006 and up	40-86	APS164-02000	30-55	APS66-10500	APS105-00200
PA-28R-180	1974 and up		40-86B	APS164-02000	30-55	APS66-10500	APS105-00200
PA-28R-200		28R-25001-1735109	40-84	APS164-01900	30-41	APS66-10600	APS105-00200
PA-28R-200		28R-7135110 and up	40-86	APS164-02000	30-55	APS66-10500	APS105-00200
PA-28R-200	1974 and up		40-86B	APS164-02000	30-55	APS66-10500	APS105-00200
PA-28-201T, PA-28R-201,201T; PA-28RT-201			40-86B	APS164-02000	30-55	APS66-10500	APS105-00200
PA-30		30-2-845	40-34	APS164-01000	30-23	APS66-06500PP APS66-06200BP	APS177-00300
PA-30		30-845 and up	40-90	APS164-02201	30-23	APS66-06500PP APS66-06200BP	APS177-00300
PA-31-300,310 Navajo		31-5-7300962	40-102	APS164-03506	30-68	APS66-03300	APS177-00400
PA-31-325 Navajo C/R		31-7300963 and up	40-102A	APS164-04406	30-68A	APS66-03300	APS177-00400
PA-31-350 Chefftain		31-5001-7652075	40-102A	APS164-04406	30-68A	APS66-03300	APS177-00400

Product, price, specifications and availability subject to change without notice.



## APPLICATION FOR OEM INSTALLED BRAKES (CONT'D)

Aircraft Model	Year	Serial Number	Wheel Assy	Brake Disc Part Number	Brake Assy	Lining Part Number	Rivet Part Number
<b>PIPER (CONT'D)</b>							
PA-31-350 Cheiftain		31-7652076 and up	40-130	APS164-07906	30-95A	APS66-06600	APS177-01600
PA-31T Cheyenne I, IA, II		31-780015 and up	40-106	APS164-03906	30-106	APS66-06800	APS177-01600
PA-32-260		32-1 and up	40-90	APS164-02201	30-65	APS66-10500	APS105-00200
PA-32-260	1974 and up		40-90A	APS164-02300	30-65	APS66-10500	APS105-00200
PA-32-260		Heavy Duty Option	40-120	APS164-21600	30-83	APS66-06200	APS177-00300
PA-32-300		32-40000 and up	40-90	APS164-02201	30-65	APS66-10500	APS105-00200
PA-32-300	1974 and up		40-90A	APS164-02300	30-65	APS66-10500	APS105-00200
PA-32-300		Heavy Duty Option	40-120	APS164-21600	30-83	APS66-06200	APS177-00300
PA-32R-300			40-90A	APS164-02300	30-65	APS66-10500	APS105-00200
PA-32R-300	1976 and up	Heavy Duty Option	40-120	APS164-21600	30-83	APS66-06200	APS177-00300
PA-32RT-300		7885002 and up	40-90A	APS164-02300	30-65	APS66-10500	APS105-00200
PA-32RT-300	1978 and up	Heavy Duty Option	40-120	APS164-21600	30-83	APS66-06200	APS177-00300
PA-32RT-300T		7887001 and up	40-90A	APS164-02300	30-65	APS66-10500	APS105-00200
PA-32RT-300T	1978 and up	Heavy Duty Option	40-120	APS164-21600	30-83	APS66-06200	APS177-00300
PA-32-301,301T; SP Series			40-90A	APS164-02300	30-65	APS66-10500	APS105-00200
PA-32-301,301T; SP Series		Heavy Duty Option	40-120C	APS164-21600	30-83A	APS66-06200	APS177-00300
PA-34-200 Seneca		7250001 and up	40-90	APS164-02201	30-65	APS66-10500	APS105-00200
PA-34-200 Seneca	1974 and up		40-90A	APS164-02300	30-65	APS66-10500	APS105-00200
PA-34-200 Seneca	All	Heavy Duty Option	40-120	APS164-21600	30-83	APS66-06200	APS177-00300
PA-34-200T Seneca II		7570001 and up	40-90A	APS164-02300	30-65	APS66-10500	APS105-00200
PA-34-200T Seneca II	All	Heavy Duty Option	40-120	APS164-21600	30-83	APS66-06200	APS177-00300
PA-34-220T Seneca III			40-90A	APS164-02300	30-65	APS66-10500	APS105-00200
PA-34-220T Seneca III	All	Heavy Duty Option	40-120C	APS164-21600	30-83A	APS66-06200	APS177-00300
PA-36 Pawnee Brave			40-101	APS164-03006	30-67B	APS66-10800	APS105-00200
PA-38-112 Tomahawk			40-78B	APS164-01700	30-9B	APS66-10600	APS105-00200
PA-38-112 Tomahawk	Early 1980		40-59D	APS164-06900	30-53A	APS66-11200	APS105-00200
PA-39 Twin Comanche			40-90	APS164-02201	30-23	APS66-06500 PP APS66-06200 BP	APS177-00300
PA-44-180 Seminole		7995001 and up	40-90A	APS164-02300	30-65	APS66-10500	APS105-00200
PA-44-180 Seminole	All	Heavy Duty Option	40-120	APS164-21600	30-83	APS66-06200	APS177-00300
PA-44-180T Turbo Seminole		1 and up	40-120	APS164-21600	30-83	APS66-06200	APS177-00300
PA-46-310P			40-120C	APS164-21600	30-83A	APS66-06200	APS177-00300
PA-46-350P			40-120C	APS164-21600	30-83A	APS66-06200	APS177-00300
PA-46-500 Meridian Series			40-142	APS164-07800*	30-83A	APS66-06200*	APS177-00300*
T-1020			40-130	APS164-07906	30-95A	APS66-06600	APS177-01600
T-1020		Heavy Duty Option	40-141	APS164-07700	30-123	APS66-06800	APS177-01600
<b>QUEST AIRCRAFT COMPANY</b>							
Kodiak 100 Series			40-179	APS164-22201*	30-182	APS66-03300*	APS177-00300*
<b>RAYTHEON</b>							
23, 24	1971 and up		40-113C	APS164-04300	30-79A	APS66-10500	APS105-00200
B19, A23, C23, 24R	1974-1977		40-113C	APS164-04300	30-75B	APS66-10500	APS105-00200
B19, A23, C23, 24R	1978 and up		40-59	APS164-06900	30-59	APS66-11200	APS105-00200
33, A33, B33		CD1-CD387	40-1	APS164-00900	30-1	APS66-11100	APS105-00200
33, A33, B33		CD388-CD639	40-37	APS164-00700	30-24	APS66-10600	APS105-00200
F33A,C; G33, V35BTC, 36		CD1272-CD1304	40-83	APS164-02504	30-54	APS66-10500	APS105-00200
F33A,C; G33, V35BTC, 36		CE301-CD634	40-83	APS164-02504	30-54	APS66-10500	APS105-00200
F33A,C; G33, V35BTC, 36		D9862 and up	40-83	APS164-02504	30-54A	APS66-10500	APS105-00200
F33A,C; G33, V35BTC, 36		E1-E824	40-83	APS164-02504	30-54	APS66-10500	APS105-00200
F33A,C		CE635-CE1071	40-83A	APS164-02505	30-54A	APS66-10500	APS105-00200
F33A,C		CE1072 and up	40-83A	APS164-02505	30-54C	APS66-10500	APS105-00200
F33A,C		CJ125-CJ155	40-83A	APS164-02505	30-54C	APS66-10500	APS105-00200
F33A,C		EA443 and up	40-83A	APS164-02505	30-54C	APS66-10500	APS105-00200
G36			40-83B	APS164-02505	30-57	APS66-10500	APS105-00200
A36, A36TC		E825-E1802	40-83A	APS164-02505	30-54	APS66-10500	APS105-00200

Product, price, specifications and availability subject to change without notice.



**APPLICATION FOR OEM INSTALLED BRAKES (CONT'D)**

Aircraft Model	Year	Serial Number	Wheel Assy	Brake Disc Part Number	Brake Assy	Lining Part Number	Rivet Part Number
<b>RAYTHEON (CONT'D)</b>							
A36, A36TC		E1803-E2254	40-83B	APS164-02505	30-54A	APS66-10500	APS105-00200
A36, A36TC		EA1-EA186	40-83A	APS164-02505	30-54A	APS66-10500	APS105-00200
A36, A36TC		EA187-EA442	40-83B	APS164-02505	30-54A	APS66-10500	APS105-00200
A36, B36TC		E2255 and up	40-83B	APS164-02505	30-54C	APS66-10500	APS105-00200
A36, B36TC		EA443 and up	40-83B	APS164-02505	30-54C	APS66-10500	APS105-00200
B55, E55, 58	1978		40-128	APS164-06106	30-93B	APS66-04400	APS177-00300
B55, E55, 58	1979 and up		40-98G	APS164-02706	30-66G	APS66-09700	APS177-00300
B55, E55, 58	All	Heavy Duty Option	40-128D	APS164-06106	30-93C	APS66-09700	APS177-00300
C55		TE1 and up	40-98	APS164-02706	30-66	APS66-04400	APS177-00300
D55		TE452 and up	40-98	APS164-02706	30-66	APS66-04400	APS177-00300
E55		TE768 and up	40-98	APS164-02706	30-66	APS66-04400	APS177-00300
56TC		TG1-TG83	40-98	APS164-02706	30-69A	APS66-02200	APS177-00300
A56T		TG84 and up	40-98	APS164-02706	30-69A	APS66-02200	APS177-00300
58		TH1 and up	40-98	APS164-02706	30-66	APS66-04400	APS177-00300
58P, 58TC	1984 and up		40-171	APS164-20806	30-145	APS66-09700	APS177-00300
B60	1984 and up		40-171	APS164-20806	30-145	APS66-09700	APS177-00300
76			40-83	APS164-02504	30-54B	APS66-10500	APS105-00200
77			40-59	APS164-06900	30-59D	APS66-11200	APS105-00200
<b>RFB RHEIN-FLUGZEUGBAU GMBH</b>							
RFB 400/600 Fantrainer			40-96E	APS164-02504	30-61E	APS66-10500	APS105-00200
<b>SAAB-SCANIA</b>							
MF1-15, MF1-17, Supporter AC, Mushshak			40-97D	APS164-02601	30-63D	APS66-10500	APS105-00200
<b>SADLER AIRCRAFT</b>							
A-22 Lasa, 18-1000PV			40-78B	APS164-01700	30-9	APS66-10600	APS105-00200
<b>SCHAEFER AIRCRAFT MODIFICATIONS</b>							
PA-31T Comanchero 750			40-106	APS164-03906	30-106	APS66-06800	APS177-01600
PA-31-350 Comanchero 500			40-195	APS164-21900	30-158	APS66-06800	APS177-01600
<b>SCHLEICHER</b>							
ASK 21, ASW 20,22,23 Sailplane			40-78B	APS164-01700	30-9	APS66-10600	APS105-00200
<b>SCHWEIZER</b>							
I-36 Glider			40-78	APS164-01700	30-9	APS66-10600	APS105-00200
<b>SIAI MARCHETTI</b>							
SF.205			40-97E	APS164-02601	30-63M	APS66-10500	APS105-00200
SF.260, SF.260C			40-3	**159-00200	30-13	APS66-10500	APS105-00200
SF.260SW			40-90A	APS164-02300	30-65A	APS66-10500	APS105-00200
S.211			40-205	N/A	30-165	APS66-10800	APS105-00200
SF.600TP			40-75G	APS164-01501	30-52P	APS66-10500	APS105-00200
<b>SLINGSBY AVIATION</b>							
T67C, T67M, 200 Firefly			40-86B	APS164-02000	30-55	APS66-10500	APS105-00200
T-3A, TR67			40-407	APS164-24400	30-236	APS66-10500	APS105-00200
<b>SOCATA</b>							
100, 110, 125, 150, 180 Series, 110ST Calopin			40-97D	APS164-02601	30-63J	APS66-10500	APS105-00200
160ST Gamement, 180T Galrien, 180GT Gailaard			40-97D	APS164-02601	30-63J	APS66-10500	APS105-00200
220, 235C,G,E; 235CA Gaucho			40-84	APS164-01900	30-41B	APS66-10600	APS105-00200
235G Guerrier, TB20, 21 Trinidad			40-84	APS164-01900	30-41B	APS66-10600	APS105-00200
TB20, 21 Trinidad			40-90B	APS164-01900	30-41B	APS66-10600	APS105-00200
TB9 Tampica, TB10 Tobago, TB200			40-97E	APS164-02601	30-63J	APS66-10500	APS105-00200
TB30 Epsilon			40-90B	APS164-02201	30-23B	APS66-06500	APS177-00300
<b>SPORTAVIA</b>							
RF6C/RS180 Sportsman			40-86A	APS164-02000	30-55B	APS66-10500	APS105-00200

Product, price, specifications and availability subject to change without notice.





## APPLICATION FOR OEM INSTALLED BRAKES (CONT'D)

Aircraft Model	Year	Serial Number	Wheel Assy	Brake Disc Part Number	Brake Assy	Lining Part Number	Rivet Part Number
<b>STOL AIRCRAFT</b>							
UC-1 Twin Bee			40-74	APS164-00700	30-51A	APS66-10600	APS105-00200
<b>SWEARINGEN AIRCRAFT</b>							
SX300			40-151	APS164-08500	30-133	APS66-10500	APS105-00200
<b>TAYLORCRAFT</b>							
F-19 Sportsman 100			40-86	APS164-02000	32-55	APS66-10500	APS105-00200
F-21, F-21A Trainer/Sport			40-86	APS164-02000	32-55	APS66-10500	APS105-00200
F-22			40-86	APS164-02000	32-55	APS66-10500	APS105-00200
<b>UNIVAIR</b>							
A2, A2A Alon			40-97A	APS164-02601	30-63A	APS66-10500	APS105-00200
M10 Mooney Cadet			40-97A	APS164-02601	30-63A	APS66-10500	APS105-00200
J-3, PA-11,12,14,16,18,20			40-60	APS164-06700	30-60	APS66-10600	APS105-00200
PA-18, PA-20, PA-22			40-84	APS164-01900	30-41	APS66-10600	APS105-00200
Stinson 108, 108-1,2,3,5			40-28	APS164-00500	30-18	APS66-10600	APS105-00200
<b>VALMET</b>							
L-70 Militrainer			40-75S	**164-04800	30-52K	APS66-10500	APS105-00200
L-90 TP Redigo			40-142	APS164-07800	30-127	APS66-06200	APS177-00300
<b>VARGA</b>							
2150A/2180 Kachina			40-97E	APS164-02601	30-63E	APS66-10500	APS105-00200
<b>WACO</b>							
Meteor, Minerva, Vela			40-97A	APS164-02601	30-63A	APS66-10500	APS105-00200
<b>WEATHERLY AVIATION</b>							
201A, 201B, 201C, 620			40-101	APS164-03006	30-67D	APS66-10800	APS105-00200
620A, 620B, 620TP		1520-1584	40-101	APS164-03006	30-89B	APS66-10800	APS105-00200
620B		1585 and up	40-101E	APS164-03006	30-89B	APS66-10800	APS105-00200
<b>WING AIRCRAFT</b>							
D-1 Derringer			40-84	APS164-01900	30-41B	APS66-10600	APS105-00200
<b>WIPAIRE FLOATS***</b>							
2100, 2350 Series			40-78A	APS164-01700	30-9C	APS66-10500	APS105-00200
3730, 4000 Series			40-78A	APS164-01700	30-9C	APS66-10500	APS105-00200
3000, 3450 Series			40-418	APS164-24500	30-241	APS66-10500	APS105-00200
6000, 8000, 8750 Series			40-418	APS164-24500	30-241	APS66-10500	APS105-00200
10000, 13000 Series			40-101, 40-101D	APS164-03006	30-67C	APS66-10800	APS105-00200
<b>WTA</b>							
PA-18-150, PA-18A-150			40-60	APS164-06700	30-60	APS66-10600	APS105-00200

\*PMA Pending

\*\*OEM Only

\*\*\*See page 13 for detailed application data

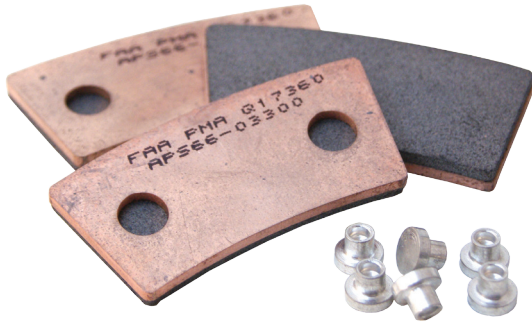
Scan with your smartphone to visit  
[www.apsbrakes.com](http://www.apsbrakes.com) for a complete  
 listing of your aircraft brake needs!





**APPLICATION FOR WIPAIRE FLOAT INSTALLATIONS**

Aircraft Model	Wipaire Model #	Wheel Assy	Brake Disc Part Number	Brake Assy	Lining Part Number	Rivet Part Number
<b>AIR TRACTOR</b>						
AT-802, AT-802A modified per STC SA01795CH	10000	40-101D	APS164-03006	30-67C	APS66-10800	APS105-00200
<b>CESSNA</b>						
172D,E,F (USAF T-41A),G,H (USAF T-41A),I,K-N,P-S; 175A-C; P172D, R172K, FR172E-H,J,K; F172D-H, K-N,P modified per STC SA00900CH	2350	40-78A	APS164-01700	30-9C	APS66-10600	APS105-00200
172D,E,F (USAF T-41A),G,H (USAF T-41A),I,K-N,P-S; 175A-C; P172D, R172K, FR172E-H,J,K; F172D-H, K-N,P modified per STC SA00900CH	2350	1002144	APS164-08500	32-3	APS66-11100	APS105-00200
182P-T; F182P,Q modified per STC SA01156CH	3000	40-418B	APS164-24500	30-241	APS66-10500	APS105-00200
185, 185A-E; A185E,F; 180, 180A-H,J,K modified per STC SA01320CH	3000	40-418B	APS164-24500	30-241	APS66-10500	APS105-00200
185, 185A-E; A185E modified per STC SA169CE	3700, 3800	40-78A	APS164-01700	30-9C	APS66-10600	APS105-00200
185A, A185F modified per STC SA7GL	3450	40-78A	APS164-01700	30-9C	APS66-10600	APS105-00200
A185E modified per STC SA805CE	3730	40-78A	APS164-01700	30-9C	APS66-10600	APS105-00200
A185E,F modified per STC SA01272CH	3450	40-418B	APS164-24500	30-241	APS66-10500	APS105-00200
A185E,F modified per STC SA1569GL	3700, 3730, 3800, 3900	40-78A	APS164-01700	30-9C	APS66-10600	APS105-00200
206, 206H, P206, P206A-E; T206H, TP206A-E; TU206A-G; U206, U206A-G modified per STC SA01185CH	3450	40-418B	APS164-24500	30-241	APS66-10500	APS105-00200
206, P206, P206A, TP206A, TU206A-E; U206, U206A-E modified per STC SA666CE	3730, 3900	40-78A	APS164-01700	30-9C	APS66-10600	APS105-00200
206, P206, P206A, TP206A, TU206A-E; U206, U206A-E modified per STC SA332CE	3730, 3900	40-78A	APS164-01700	30-9C	APS66-10600	APS105-00200
206, P206, P206A-E; TP206A-E; TU206A-G; U206, U206A-G modified per STC SA1483GL	4000	40-78A	APS164-01700	30-9C	APS66-10600	APS105-00200
TU206F,G; U206F,G modified per STC SA18GL	3700, 3730, 3800, 3900	40-78A	APS164-01700	30-9C	APS66-10600	APS105-00200
208 modified per STC SA1311GL	8000	D-30660-05	APS164-30615-3	D-30793-3, D-30793-4	APS66-10900	APS105-00200
208 modified per STC SA1311GL	8000	40-418B	APS164-24500	30-241	APS66-10500	APS105-00200
<b>MAULE</b>						
M-6-235, M-7-235,235B,235C,260,420A,420AC; MT-7-235,260; MX-7-235 modified per STC SA01412CH	3000	40-418B	APS164-24500	30-241	APS66-10500	APS105-00200
MX-7-180B,180C,235,420 modified per STC SA01411CH	2350	40-78A	APS164-01700	30-9C	APS66-10600	APS105-00200
MX-7-180B,180C,235,420 modified per STC SA01411CH	2350	1002144	APS164-08500	32-3	APS66-11100	APS105-00200
<b>PILATUS</b>						
PC-6/B2-H4 modified per STC SA227CH	6100	D-30660-05	APS164-30615-3	D-30793-3, D-30793-4	APS66-10900	APS105-00200
PC-6/B2-H4 modified per STC SA227CH	6100	40-418B	APS164-24500	30-241	APS66-10500	APS105-00200
<b>QUEST</b>						
Kodiak 100 modified per STC SA02848CH	7000	40-418B	APS164-24500	30-241	APS66-10500	APS105-00200
<b>VIKING AIR</b>						
DHC-2 (L-20A) MK.III modified per STC SA309CH	6000	40-418B	APS164-24500	30-241	APS66-10500	APS105-00200
DHC-2 MK.III modified per STC SA309CH	6000	D-30660-05	APS164-30615-3	D-30793-3, D-30793-4	APS66-10900	APS105-00200
DHC-2 MK.I modified per STC SA610GL	6000, 6100	D-30660-05	APS164-30615-3	D-30793-3, D-30793-4	APS66-10900	APS105-00200
DHC-2 MK.I modified per STC SA610GL	6000, 6100	40-418B	APS164-24500	30-241	APS66-10500	APS105-00200
DHC-3 modified per STC SA331CH	8000	D-30660-05	APS164-30615-3	D-30793-3, D-30793-4	APS66-10900	APS105-00200
DHC-3 modified per STC SA331CH	8000	40-418B	APS164-24500	30-241	APS66-10500	APS105-00200
DHC-6-100,200,300 modified per STC SA2CH	13000	40-101D	APS164-03006	30-67C	APS66-10800	APS105-00200



## Lining and Rotor Break-In Information

One of the most important factors in disc and lining performance and safety margins is proper bedding before use, yet it is the most ignored. Ninety-nine percent of warranty claims are from an improper break-in. In order for any brake system to work optimally, the disc (rotors) and pads (linings) must be properly bedded in. Other familiar names for this process are Break-in, Conditioning, or Burnishing. Whatever terminology you choose, getting the brakes properly bedded-in is crucial to peak performance. A Cessna 172 on final approach has approximately 159,000 lbs of kinetic energy to stop, translating into a lot of energy to turn into heat. Proper break-in is key to producing less heat while stopping the aircraft.

### Pins

Lining retaining pins are used on various metallic brake linings.

### PINS

Part Number	Dimensions	Applicable Brake Linings
APS177-00300	Pin, 5/16" Head Diameter & 5/32" Shank Diameter	APS66-06200, APS66-06500, APS66-02200, APS66-04400, APS66-09700, APS66-01500, APS66-01900, APS66-03300
APS177-00400	Pin, 5/16" Head Diameter & 3/16" Shank Diameter	APS66-03300
APS177-01600	Pin, 3/8" Head Diameter & 3/16" Shank Diameter	APS66-06400, APS66-06800, APS66-06600, APS164-06400, APS66-07300, APS66-09000

## Metallic Lining Break-In Procedure

1. Taxi aircraft at a high rate of speed (30-35 kts.).
2. Apply brakes with a slightly heavier than normal pressure.
3. Repeat the above operation for a second consecutive time. Do not let the brakes cool between stops.
4. Allow brakes to cool for 10-15 minutes.
5. Apply brakes to confirm that normal pressure will hold the aircraft at high level static run-up power settings. If brakes hold, conditioning procedure is complete.
6. If brakes do not hold, allow brakes to cool completely and repeat steps 1-3.

## Semi-Metallic Lining Break-In Procedure

1. Taxi aircraft for 1,500 feet at 1,700 rpm applying brake pedal force as necessary to maintain a 5-10 mph taxi speed.
2. Allow brakes to cool for 10 to 15 minutes.
3. Apply brakes and check for restraint at high static power setting. If brakes hold, break-in is complete.
4. If brakes cannot hold at static power setting, allow brakes to completely cool and repeat steps 1-3.



### Rivets

Lining retaining rivets are used on various organic brake linings.

### RIVETS

Part Number	Description	Dimensions
APS105-00200	FAA/PMA Approved Rivets for Organic Linings, Pkg of 25	Rivet, 5/16" Head Dia. & 5/32" Shank Dia.
APS105-00200-100	FAA/PMA Approved Rivets for Organic Linings, Pkg of 100	Rivet, 5/16" Head Dia. & 5/32" Shank Dia.
APS105-06700-100	FAA/PMA Approved Rivets for Organic Linings, Pkg of 100	Rivet, 5/16" Head Dia. & 5/32" Shank Dia.



**APPLICATION FOR CONVERSION KIT INSTALLATIONS**

Aircraft Model	Kit Number	Wheel Assy	Brake Disc Part Number	Brake Assy	Lining Part Number	Rivet Part Number
<b>AERO COMMANDER</b>						
100-180 Lark	199-188	40-86A	APS164-02000	30-56F	APS66-10500	APS105-00200
<b>AYRES</b>						
S-2R (Thrush)	199-68A	40-133	APS164-05806	30-98A	APS66-10800	APS105-00200
<b>CESSNA</b>						
120, 140 (SN 8004-13399), 140A (SN 13400 and up), 170, 170A,B; 172, 172A-182E, 175, 175A-C; P172D, 180, 180A-F, 182, 182A-G	199-46	40-97A	APS164-02601	30-63A	APS66-10500	APS105-00200
150, F150, A150, FA150, 152, A152, G152, FA152, 177, 177RG, 182, A182, F182	199-84	40-113	APS164-04000	30-75	APS66-10500	APS105-00200
172, F172, R172, FR172	199-84A	40-113	APS164-04000	30-75A	APS66-10500	APS105-00200
180, 180A-F,H,J,K; 185, 185A,B,E; A185F, 206E,F	199-62	40-75D	APS164-03601	30-52N	APS66-10500	APS105-00200
TU206E-G	199-62A	40-75T	APS164-08300	30-52N	APS66-10500	APS105-00200
180, 180A-F,H,J; 185, 185A,B; A185E,F; 206E,F; TU206E,F	199-155	40-75J	APS164-03601	30-52Y	APS66-10500	APS105-00200
180, 180A-F,H,J; 185, 185A,B; A185E,F; 206E,F; TU206E,F; 210, 210A-C,K-M; T210C,K-N	199-60	40-75B	APS164-01501	30-52	APS66-10500	APS105-00200
P210N (SN P21000001-P21000150)	199-60A	40-75B	APS164-01501	30-52U	APS66-10500	APS105-00200
190, 195, 195A,B	199-61	40-40C	APS164-00806	30-28C	APS66-03300	APS177-00400
310, 310A-L,N,P-R; 310J-1, E310H,J; T310P-R; 320, 320-1, 320A-F	199-64	40-40B	APS164-01406	30-28D	APS66-03300	APS177-00400
340, 340A, 401, 401A,B; 402, 402A,B; 411, 411A, 414	199-72	N/A	APS164-06406	30-100	APS66-06600	APS177-01600
340, 340A, 401, 401A,B; 402, 402A,B,C; 411, 411A, 414, 414A, 421, 421A-C	199-76	40-135A	APS164-20306	30-100	APS66-06600	APS177-01600
404	199-78	40-132	APS164-09100	30-97	APS66-06400	APS177-01600
441	199-115	40-169	APS164-20700	30-143	APS66-07300	APS177-01600
<b>DE HAVILAND</b>						
Chipmunk DHC-1-21,22,22A; DHC-1B-2-S3,S5	199-79	40-97D	APS164-02601	30-63P	APS66-10500	APS105-00200
Beaver DHC-2 Mk.I,II,III	199-95	40-134	APS164-06306	30-99	APS66-06600	APS177-01600
Twin Otter DHC-6-1,100,200,300	199-92	40-21101	APS164-22400	30-170	*66-10000	APS177-01600
<b>ERCOUPE</b>						
E, G, 415-C,D,CD (SN 813 and up); F-1,1A	199-69	40-41	APS164-00300	30-30	APS66-10500	APS105-00200
<b>GLOBE SWIFT</b>						
GC1A, GC1B	199-48	40-113C	APS164-04300	30-79B	APS66-10500	APS105-00200
<b>GULSTREAM AEROSPACE</b>						
500, 500A,B,S,U	199-122	40-198	APS164-22000	30-159B	APS66-09000	APS177-01600
500, 500A,B,S,U	199-122A	40-198	APS164-22000	30-159C	APS66-09000	APS177-01600
560F, 680F,FL,FLP,T,V,W; 681, 685, 690, 690A-D; 695, 695A,B	199-80	40-107A	APS164-07200	30-107E	APS66-09000	APS177-01600
<b>HOMEBUILT AIRCRAFT</b>						
General Usage (Standard Energy Usage)	199-102	40-78B	APS164-01700	30-9	APS66-10600	APS105-00200
General Usage (Increased Energy Brake)	199-156	40-230	*164-09900	30-181A	APS66-10600	APS105-00200
General Usage (High Energy Brake)	199-152	40-151	APS164-08500	30-133	APS66-10500	APS105-00200
General Usage (High Energy Brake)	199-152A	40-151A	APS164-08500	30-133	APS66-10500	APS105-00200
General Usage (Very High Energy Brake)	199-197	40-151	APS164-08500	30-164	APS66-06200	APS177-00300
General Usage (1-1/2" Axle)	199-103	40-78A	APS164-01700	30-9C	APS66-10600	APS105-00200
General Usage (1-1/2" Axle)	199-104	40-59A	*164-07500	30-59A	APS66-11200	APS105-00200
General Usage (1-1/2" Axle)	199-105	40-113X	APS164-04000	30-75X	APS66-10500	APS105-00200
General Usage (1-1/4" Axle)	199-204	40-281	*164-23400	30-214	APS66-10500	APS105-00200
Merlin SA26-T,AT	199-150	40-170	APS164-20900	30-144A	APS66-09000	APS177-01600
General Usage (Increased Energy Brake)	199-156	40-230	*164-09900	30-181A	APS66-10600	APS105-00200
<b>NAVION</b>						
A, B, D, E, F, G, H	199-52	40-98D	APS164-02707	30-66B	APS66-11000	APS105-00200
A, B, D, E, F, G, H	199-52A	40-98D	APS164-02707	30-66B	APS66-11000	APS105-00200
<b>PIPER</b>						
J3, PA-11,12,13,14,15,16,17,18,20; PA-18A-150	199-71	40-60	APS164-06700	30-60A	APS66-10600	APS105-00200
J3, PA-11,12,13,14,15,16,17,18,20; PA-18A-150	199-71A	40-97D	APS164-02601	30-60A	APS66-10600	APS105-00200

Product, price, specifications and availability subject to change without notice.

## APPLICATION FOR CONVERSION KIT INSTALLATIONS (CONT'D)

Aircraft Model	Kit Number	Wheel Assy	Brake Disc Part Number	Brake Assy	Lining Part Number	Rivet Part Number
<b>PIPER (CONT'D)</b>						
Aztec Series	199-63	N/A	APS164-05700	30-96	APS66-06200	APS177-00300
PA-31T, PA-3T1	199-89	40-106	APS164-03906	30-106	APS66-06800	APS177-01600
PA-31-310,325,350	199-66	N/A	APS164-07906	30-95A	APS66-06600	APS177-01600
PA-31P (425 HP), PA-31-350	199-83	40-141	APS164-07700	30-123	APS66-06800	APS177-01600
PA-31, PA-31-300,325,350	199-100	40-162	APS164-07700	30-138	APS66-06800	APS177-01600
PA-31T2	199-111	40-167	APS164-20600	30-142	APS66-07300	APS177-01600
PA-42, PA-42-720	199-112	40-166	APS164-07400	30-141	APS66-07300	APS177-01600
<b>RAYTHEON</b>						
A23, 19, 19A, M19A (SN MB1-521), 23, A23, A23A, B23, C23 (SN M2-1361), A23-24, A24 (SN MA1-268), A24R (SN MC2-7)	199-124	40-113C	APS164-04300	30-75B	APS66-10500	APS105-00200
35, A35, B35, C35, D35, E35, F35, G35, 35R, 35-33, 35-A33,B33,C33, C33A; E33A, F33, F33A,C; G33, H35, J35, K35, M35, N35, P35, S35, V35, V35A,B; A36	199-49	40-83	APS164-02504	30-54	APS66-10500	APS105-00200
35, A35, B35, C35, D35, E35, F35, G35, 35R, H35, J35, K35, M35, N35, P35, S35, 45 (TY-34), A45 (T34A), B45, D45 (T-34B), D55, D55A, E55, E55A, 95, B95A, D95A, E95, 95-55,A55,B55,B55A,B55B,C55,C55A	199-50	40-98	APS164-02706	30-66	APS66-04400	APS177-00300
D55, D55A, E55, E55A, 58, 58A, 95, B95, B95A, D95A, E95, 95-55, A55, B55,B55A,B55B,C55,C55A	199-38	40-128D	APS164-06106	30-93C	APS66-09700	APS177-00300
50, B50, C50, D50, D50A-C,E; E50, F50, G50, H50, J50	199-88	40-134A	APS164-06306	30-99	APS66-06600	APS177-00300
58P, 58TC, 60, A60, B60	199-73	40-128	APS164-06106	30-93	APS66-04400	APS177-00300
D18C,S; E18S, E18S-9700, G18S, H18, C45G,TC-45G, RC-45J, C-45H, TC-45H,45J; JRB-6, 3N,NM,TM	199-127	40-170	APS164-20900	30-144B	APS66-09000	APS177-01600
D18C,S; E18S, E18S-9700, G18S, H18, C45G,TC-45G, RC-45J, C-45H, TC-45H,45J; JRB-6, 3N,NM,TM	199-141	40-21101	APS164-22400	30-170	*66-10000	APS177-01600
65, A65, 70, 65-80,A80,B80,88	199-123	40-170B	APS164-22900	30-144A	APS66-09000	APS177-01600
A90, B90, C90,90A; E90, H90, 65-A90-1,4	199-90	40-170A	APS164-20900	30-144	APS66-09000	APS177-01600
F90, 99, 99A, A99A, B99, C99, 100, A100, B100, 200, 200C,CT,T; A200, A200C,CT; B200, B200C,CT,T	199-110	40-289	APS164-21000	30-146	*66-09100	N/A
<b>SCHAEFER AIRCRAFT MODIFICATIONS</b>						
PA-31-350 modified by Schaefer STC SA678SW	199-119	40-195	APS164-21900	30-158	APS66-06800	APS177-01600
<b>SWIFT</b>						
GC-1A, GC-1B	199-48	40-113C	APS164-04300	30-79B	APS66-10500	APS105-00200
<b>UNIVAIR</b>						
108 Series	188-87	40-97D	APS164-02601	30-63Q	APS66-10500	APS105-00200
415-C-E,G,CD Ercoupe; F1,1A Forney	199-69	40-41	APS164-00300	30-30	APS66-10500	APS105-00200
*PMA Pending						

Scan with your smartphone to visit [www.apsbrakes.com](http://www.apsbrakes.com) for a complete listing of your aircraft brake needs!





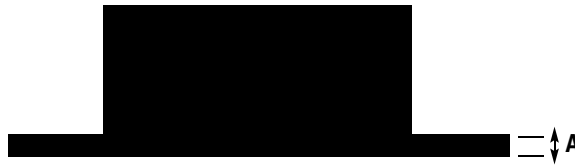


**APPLICATION FOR KIT PLANE INSTALLATIONS**

Aircraft Model	Kit Number	Wheel Assy	Brake Disc Part Number	Brake Assy	Lining Part Number	Rivet Part Number
<b>AIRCRAFT DESIGNS</b>						
Stallion	N/A	40-75B	APS164-01501	30-52	APS66-10500	APS105-00200
<b>AMERICAN HOMEBUILTS</b>						
John Doe	199-104C	40-59A	*164-07500	30-59A	N/A	N/A
STOL	199-105C	40-113X	APS164-04000	30-75X	APS66-10500	APS105-00200
<b>D &amp; J HARMON</b>						
Harmon Rocket	199-152	40-151	APS164-08500	30-133	APS66-10500	APS105-00200
<b>D.L.F. HOLDINGS</b>						
Tango	199-152	40-151	*164-09900	30-133	APS66-10500	APS105-00200
<b>EXPLORER AERONAUTIQUE</b>						
Private Explorer Std	199-62	40-75D	APS164-03601	30-52N	APS66-10500	APS105-00200
Private Explorer Float	N/A	40-101	APS164-03006	30-67B	APS66-10800	APS105-00200
<b>EXPRESS AIRCRAFT</b>						
Express 2000/2000RG	199-60	40-75B	APS164-01501	30-52	APS66-10500	APS105-00200
<b>FOUR WINDS AIRCRAFT</b>						
192/210/250T	199-60	40-75B	APS164-01501	30-52	APS66-10500	APS105-00200
<b>HENSLEY AIRCRAFT</b>						
F-19 Wolf Aerobatic	199-46	40-97A	APS164-02601	30-63A	APS66-10500	APS105-00200
F-19 Wolf Utility	199-62	40-75B	APS164-01501	30-52	APS66-10800	APS105-00200
<b>LANCAIR</b>						
IV Standard	199-208	40-963	APS164-02504	30-61E	APS66-10500	APS105-00200
IV High Energy	199-224	40-406	APS164-02504	30-233	APS66-06200	APS177-00300
IV High Energy Upgrade	199-224A	N/A	N/A	N/A	N/A	N/A
Legacy FG/ RG	199-152	40-151	*164-09900	30-133	APS66-10500	APS105-00200
<b>MURPHY MANUFACTURING</b>						
Rebel	199-71	40-60A	APS164-06700	30-60A	APS66-10600	APS105-00200
<b>PACIFIC AEROSYSTEMS</b>						
Sky Aero	199-102	40-78B	APS164-01700	30-9	APS66-10600	APS105-00200
F300	199-60A	40-75B	APS164-01501	30-52N	APS66-10500	APS105-00200
<b>PERFORMANCE AIRCRAFT</b>						
Legend	N/A	40-96E	APS164-02504	30-61E	APS66-10500	APS105-00200
<b>PITTS</b>						
S1-C, S1-S	199-102	40-78B	APS164-01700	30-9	APS66-10600	APS105-00200
(Pitts Special)	199-103	40-78J	APS164-01700	30-9C	APS66-10600	APS105-00200
<b>RANS</b>						
S-7C	199-104	40-59A	*164-07500	30-59A	APS66-11200	N/A
S-16	199-102	40-78B	APS164-01700	30-9	APS66-10600	APS105-00200
<b>SKYSTAR AIRCRAFT</b>						
Kit Fox	199-215	40-281	*164-23400	30-224	APS66-10500	N/A
Pulsar	199-102	40-78B	APS164-01700	30-9	APS66-10600	APS105-00200
<b>STEEN AERO LAB</b>						
Skybolt	199-104	40-59A	*164-07500	30-59A	APS66-11200	APS105-00200
	199-105	40-113X	APS164-04000	30-75X	APS66-10500	APS105-00200
<b>VAN'S AIRCRAFT</b>						
RV-3 - RV-9	199-102	40-75B	APS164-01700	30-9	APS66-10600	APS105-00200
RV-10	199-104	40-59A	*164-07500	30-59A	APS66-11200	APS105-00200
<b>VELOCITY AIRCRAFT</b>						
SE/XL	199-60	40-75B	APS164-01501	30-52	APS66-10600	APS105-00200

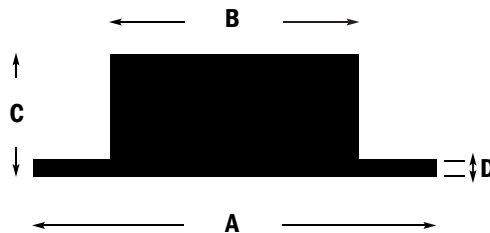
\*OEM only

Please check your wheel brake assembly part numbers prior to ordering. Many kit planes use alternate assemblies.



### MINIMUM WEAR DIMENSIONS

Part Number	Dimension "A" Inches/MM	Part Number	Dimension "A" Inches/MM	Part Number	Dimension "A" Inches/MM	Part Number	Dimension "A" Inches/MM
APS164-00300	0.205/5.207	APS164-02706	0.330/8.382	APS164-06506	0.240/6.096	APS164-21200	0.327/8.306
APS164-00400	0.162/4.115	APS164-02707	0.330/8.382	APS164-06700	0.220/5.588	APS164-21600	0.405/10.287
APS164-00500	0.157/3.988	APS164-02800	0.227/5.766	APS164-06900	0.205/5.207	APS164-21900	0.590/14.986
APS164-00700	0.345/8.763	APS164-03006	0.282/7.163	APS164-07200	0.492/12.497	APS164-22000	0.360/9.144
APS164-00800	0.334/8.484	APS164-03106	0.163/4.140	APS164-07400	0.492/12.497	APS164-22201	0.537/13.640
APS164-00900	0.227/5.766	APS164-03300	0.235/5.969	APS164-07700	0.470/11.938	APS164-22202	0.537/13.640
APS164-01000	0.345/8.763	APS164-03506	0.260/6.604	APS164-07800	0.450/11.43	APS164-22400	0.385/9.779
APS164-01100	0.345/8.763	APS164-03601	0.327/8.306	APS164-07900	0.465/11.811	APS164-22900	0.410/10.414
APS164-01300	0.227/5.764	APS164-03906	0.600/15.240	APS164-08200	0.327/8.306	APS164-23001	0.582/14.783
APS164-01406	0.334/8.484	APS164-04000	0.205/5.207	APS164-08300	0.327/8.306	APS164-23002	0.582/14.783
APS164-01501	0.327/8.306	APS164-04300	0.205/5.207	APS164-08406	0.330/8.382	APS164-24200	0.167/4.242
APS164-01506	0.327/8.306	APS164-04406	0.334/8.484	APS164-08500	0.325/8.255	APS164-24400	0.290/7.366
APS164-01600	0.157/3.988	APS164-04700	0.345/8.763	APS164-09100	0.492/12.497	APS164-24500	0.327/8.306
APS164-01700	0.167/4.242	APS164-05006	0.475/12.065	APS164-20206	0.334/8.484	APS164-30007	0.190/4.826
APS164-01900	0.227/5.766	APS164-05500	0.492/12.497	APS164-20306	0.465/11.811	APS164-30195	0.190/4.826
APS164-02000	0.205/5.207	APS164-05606	0.395/10.033	APS164-20500	0.525/13.335	APS164-30388	0.325/8.255
APS164-02201	0.345/8.763	APS164-05700	0.525/13.335	APS164-20600	0.455/11.557	APS164-30398	0.325/8.255
APS164-02300	0.345/8.763	APS164-05806	0.395/10.033	APS164-20700	0.410/10.414	APS164-30414	0.325/8.255
APS164-02504	0.445/11.303	APS164-06106	0.475/12.065	APS164-20800	0.475/12.065	APS164-30440	0.190/4.826
APS164-02505	0.445/11.303	APS164-06306	0.465/11.811	APS164-20900	0.410/10.414	APS164-30615-4	0.190/4.826
APS164-02601	0.205/5.207	APS164-06406	0.465/11.811	APS164-21000	0.436/11.074	APS164-30615-2	0.330/8.382
						APS164-30615-3	0.330/8.382

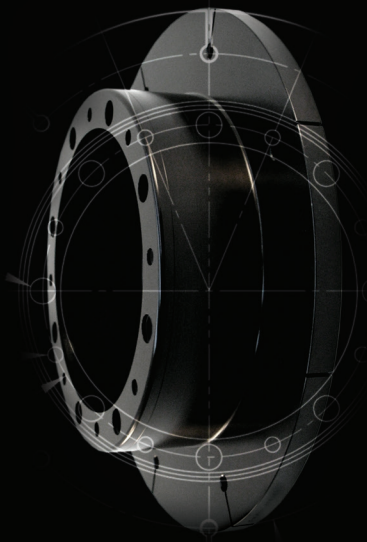


### MCCAULEY BRAKE DISC INFORMATION

Brake Disc Part Number	(A) OD Wear Surface	(B) OD Base	(C) Overall Height	(D) Thickness of Wear Surface	Number of Mounting Holes	Diameter of Mounting Holes
APS164-30195	7.495"	5.49"	2.070"	0.225"	6"	5/16"
APS164-30388	7.495"	5.49"	2.335"	0.355"	6"	5/16"
APS164-30414	7.495"	5.49"	2.155"	0.355"	6"	5/16"
APS164-30398	7.495"	5.49"	2.100"	0.355"	6"	5/16"
APS164-30440	7.495"	5.49"	1.965"	0.215"	6"	5/16"
APS164-30615-4	7.495"	5.50"	1.515"	0.215"	3"	5/16"
APS164-30615-2	7.495"	5.50"	1.890"	0.355"	3"	5/16"
APS164-30615-3	7.495"	5.50"	1.660"	0.355"	3"	5/16"



# NOTES



*Find all of our available brake components at*  
***WWW.APSBRAKES.COM***

